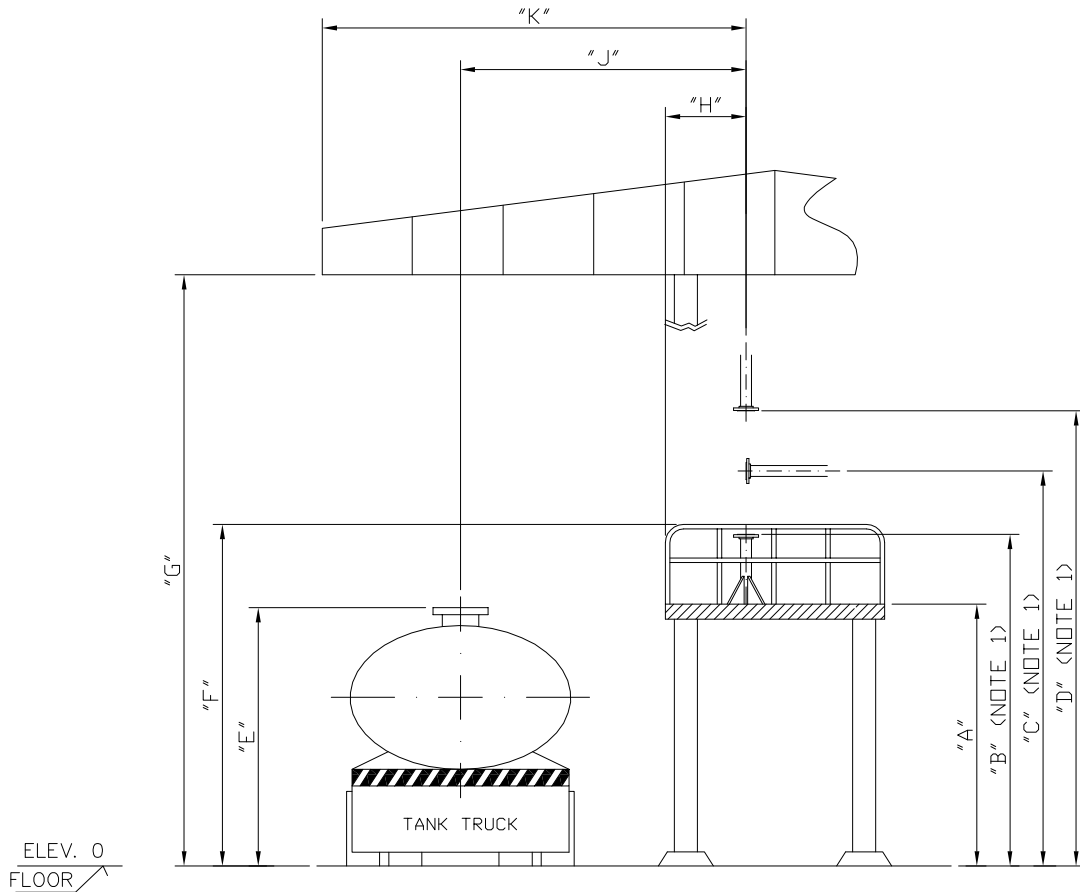


THIS DRAWING IS THE INTELLECTUAL PROPERTY OF REDLANDS DO BRASIL LTDA, AND CAN NOT BE REPRODUCED WITHOUT THE SPECIFIC AUTHORIZATION AND SHOULD BE RETURNED IMMEDIATELY WHEN REQUESTED. THE INFORMATION CONTAINED IN THE DRAWINGS IS CONFIDENTIAL AND SHOULD NOT BE USED FOR ANY OTHER APPLICATION TO THAT WHICH WAS ORIGINALLY INTENDED.



DATA NECESSARY TO BE INFORMED

"A": _____ "B": _____ "C": _____ "D": _____ "E": _____
 "F": _____ "G": _____ "H": _____ "J": _____ "K": _____

LOADING ARM

DIAMETER OF ARM (inch): _____
 OPERATIONAL FLOW RATE (LPM): _____
 WORKING PRESSURE (Kgf/cm²): _____
 MATERIAL OF CONSTRUCTION: _____
 MATERIAL OF SEALS: _____

TANK TRUCK

MANHOLE SIZE (inch): _____
 NUMBER OF COMPARTMENTS: _____
 DISTANCE BETWEEN COMPARTMENT CENTERLINE (mm): _____

ACESSÓRIES

DEFLECTOR: YES NO
 VALVE: YES NO
 REMOTE CONTROL: YES NO
 DRIP BUCKET: YES NO
 TELESCOPIC LOCKING DEVICE: YES NO
 OTHERS: _____

GENERAL

PRODUCT TO BE HANDLED: _____
 OPERATING TEMPERATURE (°C): _____
 VISCOSITY (cst): _____

NOTE 1: QUOTAS "B" "C" "D" REFERS TO THE POSITION OF CONNECTION FLANGE TO WHICH LOADING ARM IS TO BE ATTACHED, PRODUCT FROM TOP, BOTTOM OR SIDE.



LOADING ARM ESPECIFICATION SHEET

DATE: / /

COMPANY:	CONTACT:	QTY:	UNITS
PROJECT:	TEL:	FAX:	